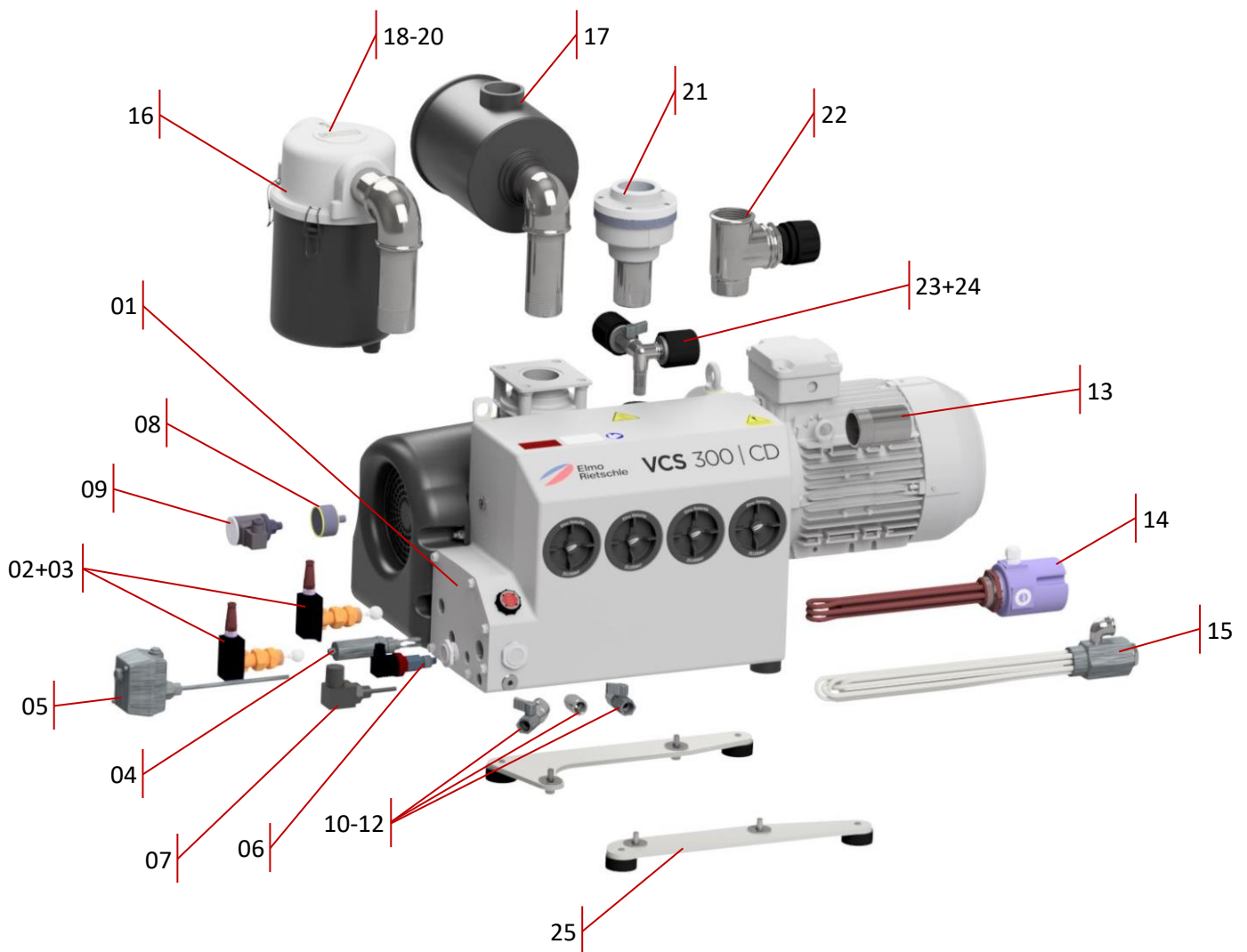


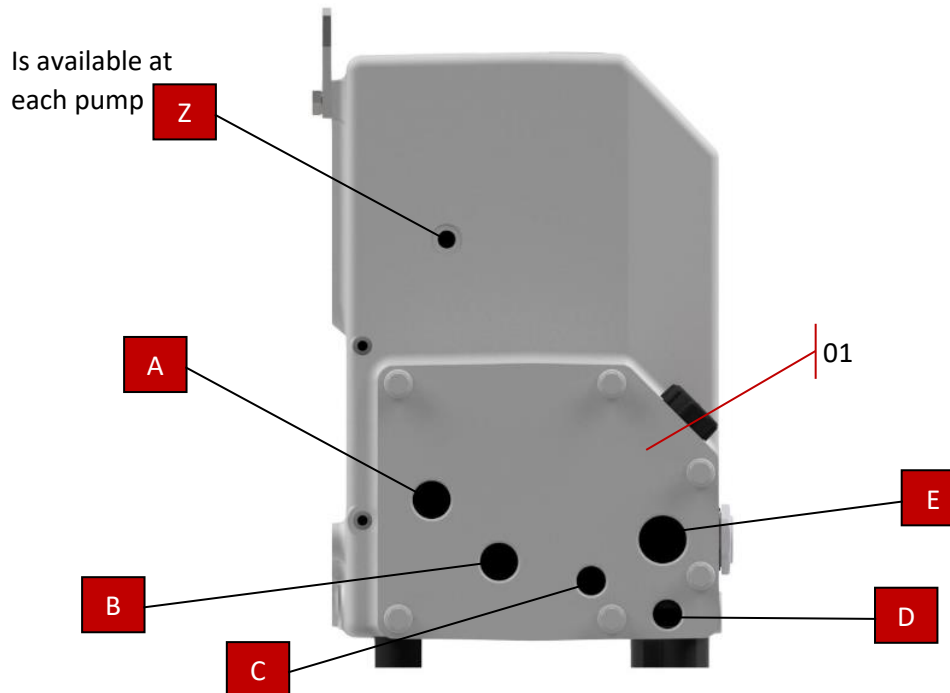
VCS/VCX 200+300 Accessory List

All accessory options for our vacuum pump:



01	Accessory cover	08	Pressure monitoring ZDM	15	Cooling rod	22	Vacuum regulation ZRV
02	Level switch 2x	09	Pressure monitoring el.	16	Dust separator ZFP	23	Gas ballast EXT
03	Level switch	10	Oil drain	17	Suction filter ZVF	24	Gas ballast ADJ
04	Liquiphant	11	Oil drain + ball valve	18	ZFF 216 (10) glass fibre	25	Foot adapter VC
05	Temperature switch adj.	12	Oil drain + ball valve + elb.	19	ZFF 216 (20) PE		
06	Temperature switch fix.	13	Hose connection	20	ZFF 216 (30) metal		
07	PT100	14	Heating element	21	Non-return valve ZRK		

Construction of the accessory cover:



Accessories oil separator (Accessory cover):

A				
Pos.	Size	Item	Material	Add. list price
02	200/300	Level switch min. & max. (2x)	2x 8209610000 + 2x 7040380000	1.870,00 €

B				
Pos.	Size	Item	Material	Add. list price
02	200/300	Level switch min. & max. (2x)	2x 8209610000 + 2x 7040380000	1.870,00 €
03	200/300	Level switch min.	8209610000 + 7040380000	468,00 €
04	200/300	Level switch Liquiphant	ZS1153604	968,00 €

C				
Pos.	Size	Item	Material	Add. list price
05	200/300	Temperature switch adjustable	2096870000	391,00 €
06	200/300	Temperature switch fixed	8209730000	350,00 €
07	200/300	Resistance thermometer PT100	7319840000	487,00 €

D				
Pos.	Size	Item	Material	Add. list price
	G 1/2	Possibility for oil drain on the side		

E				
Pos.	Size	Item	Material	Add. list price
	G1	Possibility for oil sight glass on the side		

Accessories oil separator housing:

Z	G 1/4			
Pos.	Size	Item	Material	Add. list price
08	200/300	Pressure monitoring ZDM	7306730000	42,00 €
09	200/300	Pressure monitoring electrical	7316320000	274,00 €

other				
Pos.	Size	Item	Material	Add. list price
01	200/300	Accessory cover*	ZS1203175	70,00 €
10	200/300	Extended oil drain	2146280000	7,14 €
11	200/300	Extended oil drain + ball valve	2140110000	14,40 €
12	200/300	Extended oil drain + ball valve + elbow	2146310000	21,30 €
13	200/300	Hose connection (exhaust)	5062570000	21,90 €
14	200/300	Heating element*	On request	773,00 €
15	200/300	Cooling rod*	On request	663,00 €

* If this accessory is used, another material must be removed from the parts list.

Accessories on the suction side:

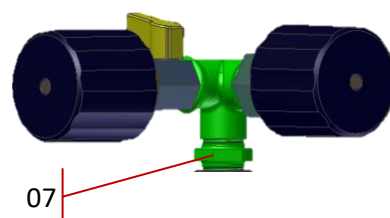
Pos.	Size	Item	Material	Add. list price
16	200/300	Dust separator ZFP 216 (01)	2086770000	528,00 €
17	200/300	Suction filter ZVF 50 (53)	2088860530	490,00 €
18	200/300	Moisture separator ZFF 216 (10) glass fibre	2144570000	725,00 €
19	200/300	Moisture separator ZFF 216 (20) PE	2144490000	765,00 €
20	200/300	Moisture separator ZFF 216 (30) metal	2144540000	1.200,00 €
21	200/300	External non-return valve ZRK	2040540000	446,00 €
22	200/300	Vacuum regulating valve ZRV	2022280300	146,00 €

Gas ballast:

Standard Gas ballast (w. nozzle)
Expand Gas ballast (w/o nozzle)



Adjustable gas ballast (w. nozzle)



Pos.	Size	Item	Material	Add. list price
23	200/300	Gas ballast EXT*	2004480000	20,00 €
24	200/300	Gas ballast ADJ*	ZS1203692	149,00 €

Compared to standard gas ballast

* If this accessory is used, another material must be removed from the parts list.

Oil:

MULTI-LUBE	– Mineral oil	Standard VCS
SUPER-LUBE	– Synthetic oil	Standard VCX
ECO-LUBE	– Synthetic oil, suitable for food and pharmaceutical applications	
OXY-LUBE	– Synthetic oil, oxygen applications, BAM-approved	Standard VCO

Pos.	Size	Item	Material	Add. list price
-	200/300	Super-Lube*	-	230,00 €
-	200/300	Eco-Lube*	-	375,00 €

Compared to Multi-Lube

* If this accessory is used, another material must be removed from the parts list.

Replacing VC pumps:

Pos.	Size	Item	Material	Add. list price
25	200/300	Foot adapter VC*	ZS1206083	300,00 €

* If this accessory is used, another material must be removed from the parts list.