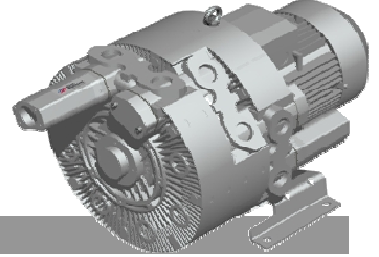




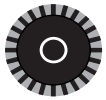
**Elmo  
Rietschle**  
A Gardner Denver Product



# G-BH7

## Data sheet 2BH7 630-0N

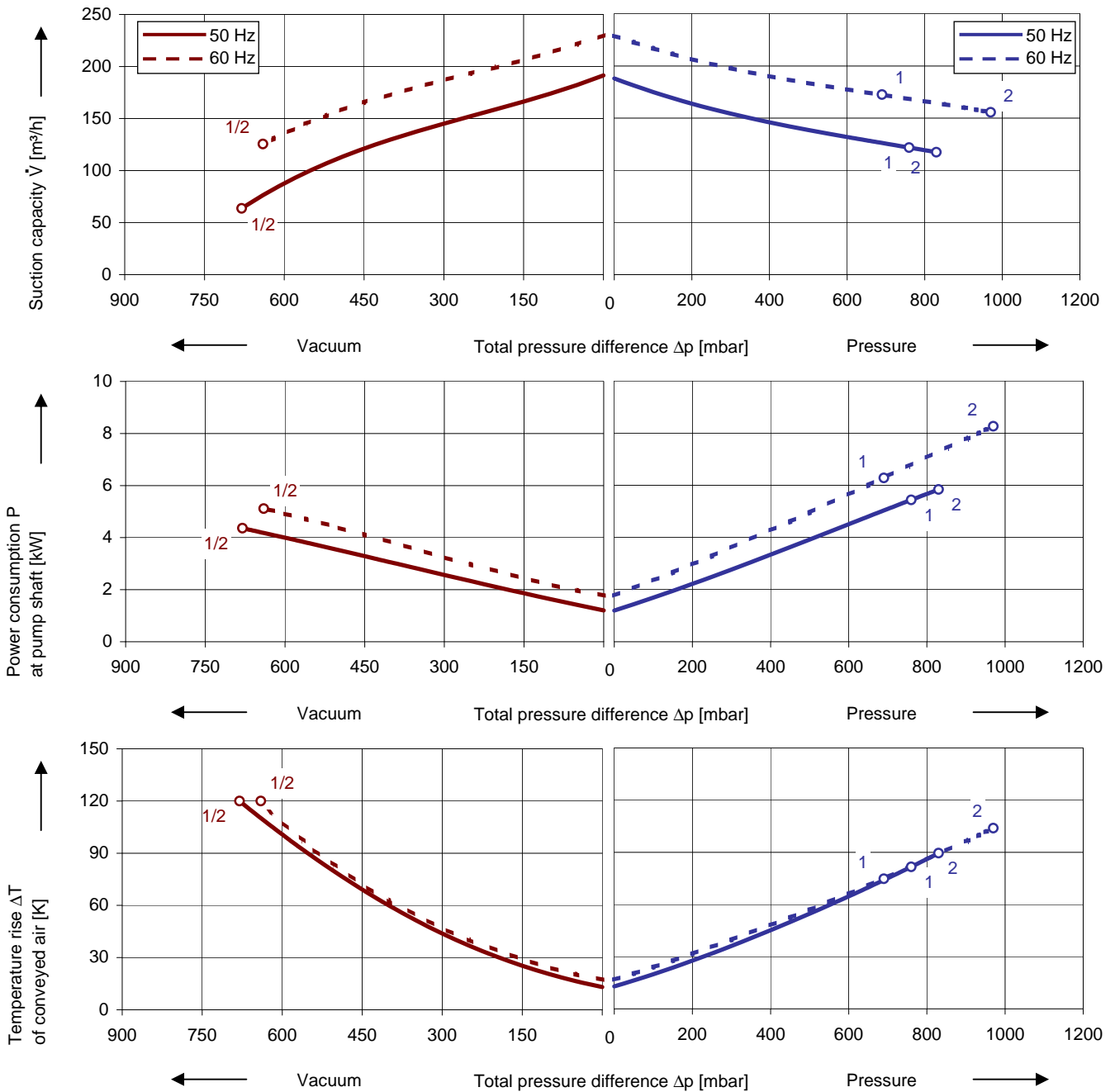
Side channel blower with IE2-motors



### Performance curves

#### Vacuum operation

#### Compressor operation



The performance curves are based on air at a temperature of 15 °C and an atmospheric pressure of 1013 mbar with a tolerance of ± 10 %. The total pressure differences are valid for suction and ambient temperature up to 25 °C. For other conditions please get in touch with us.

Every G-BH pump can be used both as vacuum pump and compressor in continuous operation over the total performance curve range. The motors are available as standard in protection category IP 55 and insulation class F. The vacuum pumps / compressors are UL and CSA approved.

## Selection and ordering data

### Type 2BH7 630-0N

No.	Fre- quency	Rated			Max. differential pressure <sup>1)</sup>		Sound pressure level <sup>2)</sup>	Gewicht ca.	Order No.
		Voltage	Current	Power	Vacuum	Pressure			
		Hz	V	A	kW	mbar		dB(A)	
<b>3~ 50/60 Hz, IP55, Insulation material class F, UL 507 and CSA 22.2 No 113 (certificate number E225239), IE2 / (EFF I)</b>									
1	50	350 - 450 Δ / 610 - 725 Y	11.1 Δ / 6.4 Y	5.5	-680	760	72	94	<b>2BH7630-0NP77-7</b>
	60	400 - 500 Δ / 690 - 725 Y	11.0 Δ / 6.4 Y	6.3	-640	690	76		
2	50	350 - 450 Δ / 610 - 725 Y	15.0 Δ / 8.7 Y	7.5	-680	830	72	91	<b>2BH7630-0NP67-7</b>
	60	400 - 500 Δ / 690 - 725 Y	15.1 Δ / 8.8 Y	8.6	-640	970	76		
<b>3~ 50/60 Hz, IP55, Insulation material class F, UL 507 and CSA 22.2 No 113 (certificate number E225239), IE2 / (EFF I)</b>									
1	50	450 - 550 Δ	8.7 Δ	5.5	-680	760	72	94	<b>2BH7630-0NP75-7</b>
	60	520 - 600 Δ	8.6 Δ	6.3	-640	690	76		
2	50	450 - 550 Δ	11.6 Δ	7.5	-680	830	72	91	<b>2BH7630-0NP65-7</b>
	60	520 - 600 Δ	11.5 Δ	8.6	-640	970	76		

1) Relief valves available for limiting differential pressure.

2) Measuring surface sound pressure level acc. to EN ISO 3744, measured with an equivalent unit at a distance of 1 m. The pump is throttled to an average suction pressure, with piping connected, but no relief valves fitted, tolerance ±3 dB (A).

All G-BH fulfill the 2006/42/EC (machinery) and 2006/95/EC (low voltage) directives and the EN 60034-1 norm "Rotating electrical machines".

The motors comply with EN 60 034-1 / -2 / -30 (IEC 60034) and thermal class F.

For three phase motors tolerances are +/-10% for fixed voltage motors and +/-5% for voltage range motors. Single phase machines are designed with a +/- 5% tolerance.

The frequency tolerance is +/- 2% maximum.

## Other voltages

50 Hz	50 Hz voltage range	60 Hz voltage range	86 Hz (5000 rpm)	100 Hz (6000 rpm)	2BH7...-..		
<b>3~ IE2 / (EFF I)</b>							
200 V Δ / 345 V Y	180 - 240 V Δ / 310 - 415 V Y	200 - 275 V Δ / 345 - 480 V Y	-----	400 V Δ		P	1
500 V Δ	450 - 550 V Δ	520 - 600 V Δ	-----	-----		P	5
230 V Δ / 400 V Y	200 - 260 V Δ / 350 - 450 V Y	230 - 290 V Δ / 400 - 500 V Y	400 V Δ	-----		P	6
400 V Δ / 690 V Y	350 - 450 V Δ / 610 - 725 V Y	400 - 500 V Δ / 690 - 725 V Y	-----	-----		P	7
<b>3~ <sup>4)</sup></b>							
-----	185 - 225 V Δ / 320 - 390 V Y	200 - 240 V Δ / 345 - 415 V Y	-----	400 V Δ		H	1
-----	200 - 240 V Δ / 345 - 415 V Y	220 - 275 V Δ / 380 - 480 V Y	380 V Δ	-----		H	6
-----	345 - 415 V Δ	380 - 480 V Δ	-----	-----		H	7
-----	500 V Δ	575 V Δ	-----	-----		C	5

4) Performance can differ if standard motors are used. Please refer to corresponding data sheets.

Changes in particular of the quoted performance curve, data and weights may occur without prior notice. The data given do not constitute an obligation from our side to deliver as shown.

# Gardner Denver

*Elmo Rietschle is a brand of Gardner  
Denver's Industrial Products Group  
and part of Blower Operations*

er.de@gardnerdenver.com  
www.gd-elmorietschle.com

Gardner Denver Schopfheim GmbH

Roggenbachstraße 58  
79650 Schopfheim - Germany

Tel.: +49 7622 392-0  
Fax: +49 7622 392-300

Gardner Denver Deutschland GmbH

Industriestraße 26  
97616 Bad Neustadt - Germany

Tel.: +49 9771 6888-0  
Fax: +49 9771 6888-4000