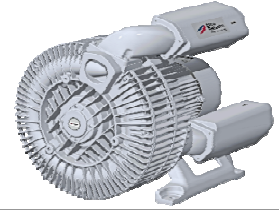


**Elmo  
Rietschle**

**IE3**

**CE** **UL** **US**



# G-BH 2 N

## Data sheet 2BH2 0540-2

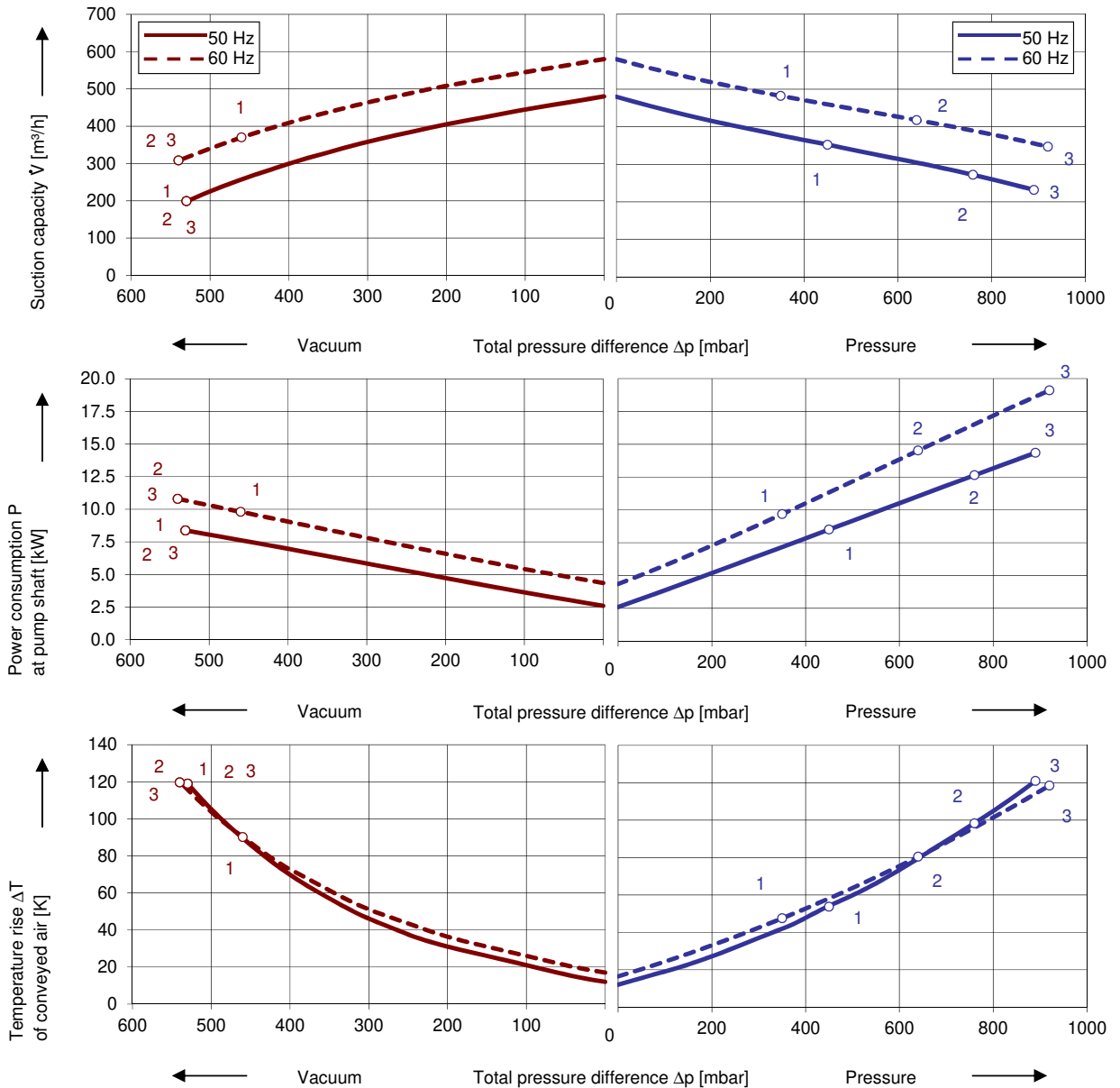
Side channel blower with IE3-motors



### Performance curves

#### Vacuum operation

#### Compressor operation



The performance curves are based on air at a temperature of 15 °C and an atmospheric pressure of 1013 mbar with a tolerance of  $\pm 10\%$ . The total pressure differences are valid for suction and ambient temperature up to 25 °C. For other conditions please get in touch with us.

Every G-BH pump can be used both as vacuum pump and compressor in continuous operation over the total performance curve range. The motors are available as standard in protection category IP 55 and insulation class F. The vacuum pumps / compressors are UL and CSA approved.

## Selection and ordering data

Type										
No.	Fre- quency Hz	Rated			Max. differential pressure <sup>2)</sup>		Sound pr. level <sup>3)</sup> dB(A)	Efficiency <sup>4)</sup>	Weight Approx. kg	Order No.
		Voltage <sup>1)</sup>	Current	Power	Vacuum	Pressure				
		V	A	kW	mbar					
<b>IE3 3~ 50/60 Hz, IP55, Insulation material class F, UL 1450 and CAN/CSA C22.2 No. 68-09 (certificate number E225239)</b>										
1	50	190-210 Δ	30.8 Δ	8.6	-530	450	70	IE3	132	2BH20540-2AAKN1-BA
	60	190-210 YY / 380-420 Y	35.2 YY / / 17.6 Y	9.9	-460	350	75	IE3		
	60	200 YY	35.2 YY	9.9	-460	350	75	NP		
2	50	190-210 Δ	46.4 Δ	12.6	-530	760	70	IE3	152	2BH20540-2AAKP1-BA
	60	190-210 YY / 380-420 Y	52.8 YY / / 26.4 Y	14.5	-540	640	75	IE3		
	60	200 YY	52.8 YY	14.5	-540	640	75	NP		
3	50	190-210 Δ	63.1 Δ	17.3	-530	890	70	IE3	161	2BH20540-2AAKQ1-BA
	60	190-210 YY / 380-420 Y	72.2 YY / / 36.1 Y	19.9	-540	920	75	IE3		
	60	200 YY	72.2 YY	19.9	-540	920	75	NP		
<b>IE3 3~ 50/60 Hz, IP55, Insulation material class F, UL 1450 and CAN/CSA C22.2 No. 68-09 (certificate number E225239)</b>										
1	50	220-240 Δ / 380-420 Y	26.8 Δ / / 15.5 Y	8.6	-530	450	70	IE3	132	2BH20540-2AAKN6-BA
	60	220-240 YY / 440-480 Y	30.6 YY / / 15.3 Y	9.9	-460	350	75	IE3		
	60	230 YY / 460 Y	30.6 YY / / 15.3 Y	9.90	-460	350	75	NP		
2	50	220-240 Δ / 380-420 Y	40.3 Δ / / 23.3 Y	12.6	-530	760	70	IE3	152	2BH20540-2AAKP6-BA
	60	220-240 YY / 440-480 Y	46.0 YY / / 23.0 Y	14.5	-540	640	75	IE3		
	60	230 YY / 460 Y	46.0 YY / / 23.0 Y	14.5	-540	640	75	NP		
3	50	220-240 Δ / 380-420 Y	54.9 Δ / / 31.7 Y	17.3	-530	890	70	IE3	161	2BH20540-2AAKQ6-BA
	60	220-240 YY / 440-480 Y	62.8 YY / / 31.4 Y	19.9	-540	920	75	IE3		
	60	230 YY / 460 Y	62.8 YY / / 31.4 Y	19.9	-540	920	75	NP		
<b>IE3 3~ 50/60 Hz, IP55, Insulation material class F, UL 1450 and CAN/CSA C22.2 No. 68-09 (certificate number E225239)</b>										
1	50	475-525 Y	12.4 Y	8.6	-530	450	70	IE3	132	2BH20540-2AAQN3-BA
	60	550-600 Y	12.2 Y	9.9	-460	350	75	NP		
2	50	475-525 Y	18.6 Y	12.6	-530	760	70	IE3	152	2BH20540-2AAQP3-BA
	60	550-600 Y	18.4 Y	14.5	-540	640	75	NP		
3	50	475-525 Y	25.4 Y	17.3	-530	890	70	IE3	161	2BH20540-2AAQQ3-BA
	60	550-600 Y	25.1 Y	19.9	-540	920	75	NP		
<b>IE3 3~ 50/60 Hz, IP55, Insulation material class F, UL 1450 and CAN/CSA C22.2 No. 68-09 (certificate number E225239)</b>										
1	50	380-420 Δ / 660-725 Y	15.5 Δ / / 8.9 Y	8.6	-530	450	70	IE3	132	2BH20540-2AAQN7-BA
	60	440-480 Δ	15.3 Δ	9.9	-460	350	75	IE3		
	60	460 Δ	15.3 Δ	9.90	-460	350	75	NP		
2	50	380-420 Δ / 660-725 Y	23.3 Δ / / 13.4 Y	12.6	-530	760	70	IE3	152	2BH20540-2AAQP7-BA
	60	440-480 Δ	23.0 Δ	14.5	-540	640	75	IE3		
	60	460 Δ	23.0 Δ	14.5	-540	640	75	NP		
3	50	380-420 Δ / 660-725 Y	31.7 Δ / / 18.3 Y	17.3	-530	890	70	IE3	161	2BH20540-2AAQQ7-BA
	60	440-480 Δ	31.4 Δ	19.9	-540	920	75	IE3		
	60	460 Δ	31.4 Δ	19.9	-540	920	75	NP		

2) Relief valves available for limiting differential pressure.

3) Measuring surface sound pressure level acc. to EN ISO 3744, measured with an equivalent unit at a distance of 1 m. The pump is throttled to an average suction pressure, with piping connected, but no relief valves fitted, tolerance ±3 dB (A).

4) The motors according to NEMA MG1-12. NP=NEMA Premium; NEMA Premium includes IE3.

All G-BH match the 2006/42/EC (machinery) and 2006/95/EC (low voltage) directives and the EN 60034 norm "Rotating electrical machines".

Service factor (SF) and motor efficiency according NEMA MG1-12.

Voltage tolerances for three phase motors are +/-10%.

The frequency tolerance is +/- 2 % maximum.

## Motor for alternate voltages

Voltage range		Efficiency <sup>4)</sup>	c  US	60 Hz	2BH2..... □ . □
50 Hz	60Hz				
<b>3~</b>					
200 VΔ	200 V YY / 230 VΔ / 400 VY	NEMA Premium IE3	•		K 1
190-210 VΔ	190-210 VYY / 220-240 VΔ / 380-420VY				
200 V YY / 230 VΔ / 400 VY	230 V YY / 460 VY	NEMA Premium IE3	•		K 6
190-210 VYY / 220-240 VΔ / 380-420VY	220-240 VYY / 440-480VY				
475-525 V Y	550-600 V Y	NEMA Premium	•		Q 3
475-525 VΔ	550-600 VΔ				
400 VΔ / 690 V Y	460 VΔ	NEMA Premium	•		Q 7

Changes in particular of the quoted performance curve, data and weights may occur without prior notice. The data given does not constitute an obligation from our side to deliver as shown.



Your Ultimate Source for Vacuum and Pressure

Gardner Denver Deutschland GmbH  
 Industriestraße 26  
 97616 Bad Neustadt - Germany  
 Tel.: +49 9771 6888-0  
 Fax: +49 9771 6888-4000  
[www.gd-elmorietschle.com](http://www.gd-elmorietschle.com)

Gardner Denver Schopfheim GmbH  
 Johann-Sutter-Straße 6+8  
 79650 Schopfheim - Germany  
 Tel.: +49 7622 392-0  
 Fax: +49 7622 392-300

• [er.de@gardnerdenver.com](mailto:er.de@gardnerdenver.com)