

Data sheet 2BH1 530

Side channel blower

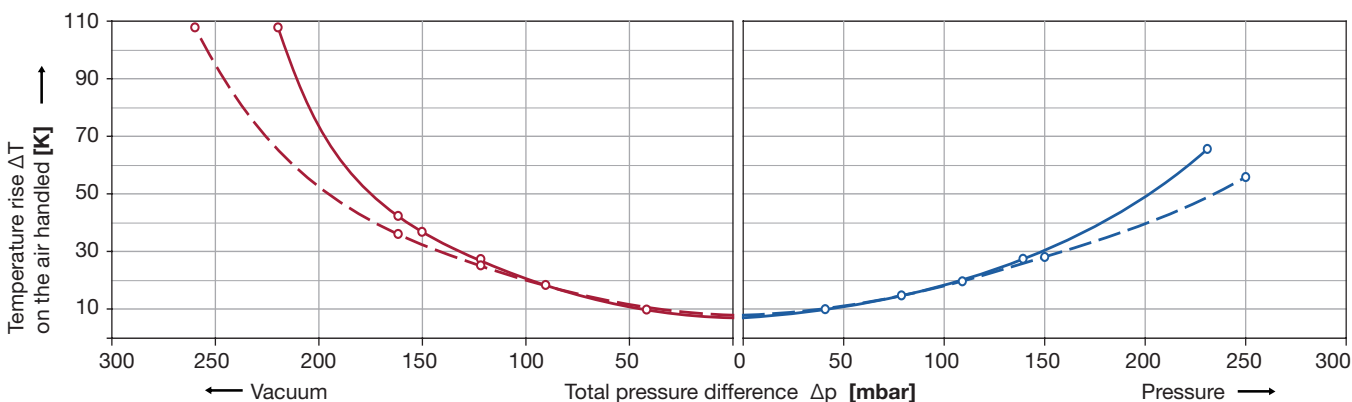
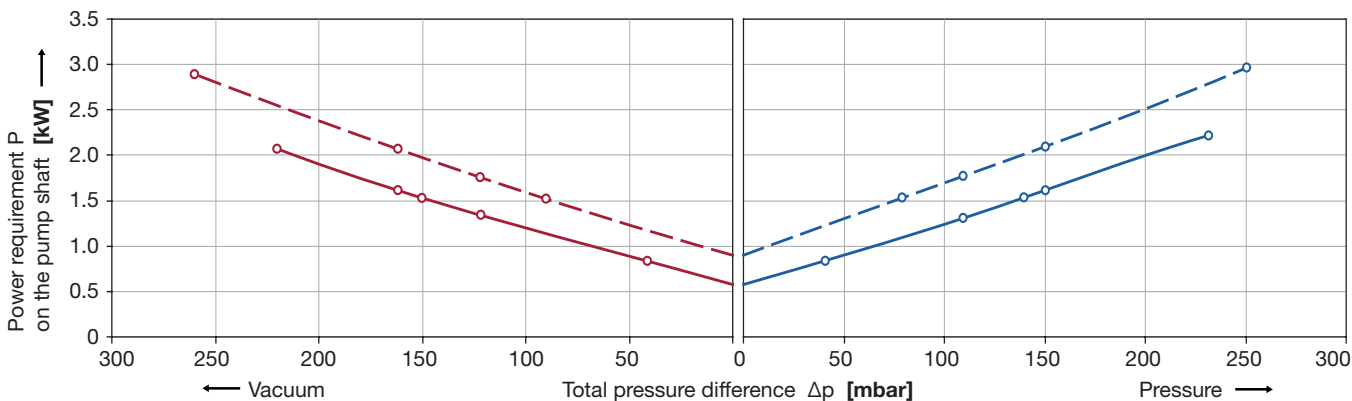
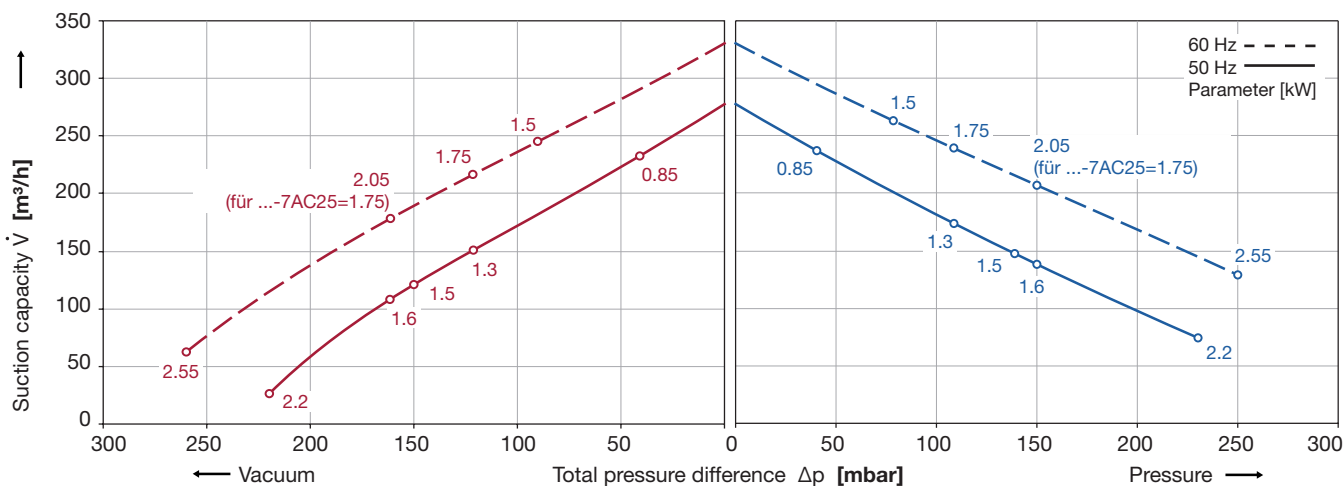
G-Series (G_200)



Performance curves

Vacuum operation

Pressure operation



The performance curves are based on air at a temperature of 15 °C and an atmospheric pressure of 1013 mbar with a tolerance of $\pm 10\%$. The total pressure differences are valid for suction and ambient temperature up to 25 °C. For other conditions please confer with us.

Each 2BH1 type can be applied both as vacuum pump and compressor in continuous operation over the total stated performance curve range. The motors are available as standard in protection category IP 55 and isolation class F. The vacuum pumps/compressors are approved according to UL and CSA.

Selection and ordering data

Order-Nr.	Fre- quency	Rated-			max. diff. pressure 2)		Sound- pressure- level 3)	Weight ca.
		output	voltage	current	vacuum	pressure		
		Hz	kW	V	A	mbar		
3~ 50/60 Hz, IP55, insulation class F 1)								
2BH1 530-7AH06	50	0.85	200Δ...240Δ / 345Y...415Y	4.2Δ / 2.4Y	-40	+40	65	19
2BH1 530-7AH16	50	1.3	200Δ...240Δ / 345Y...415Y	5.7Δ / 3.3Y	-120	+110	65	21
	60	1.5	220Δ...275Δ / 380Y...480Y	5.7Δ / 3.3Y	-90	+80	71	21
2BH1 530-7AH26	50	1.6	200Δ...240Δ / 345Y...415Y	7.5Δ / 4.3Y	-160	+150	65	22
	60	2.05	220Δ...275Δ / 380Y...480Y	7.6Δ / 4.4Y	-160	+150	71	22
2BH1 530-7AH36	50	2.2	200Δ...240Δ / 345Y...415Y	9.7Δ / 5.6Y	-220	+230	65	26
	60	2.55	220Δ...275Δ / 380Y...480Y	1.03Δ / 6.0Y	-260	+250	71	26
2BH1 530-7AC05	50	0.85	500Δ	1.92Δ	-40	+40	65	19
2BH1 530-7AC15	50	1.3	500Δ	2.65Δ	-120	+110	65	21
	60	1.5	575Δ	2.6Δ	-90	+80	71	21
2BH1 530-7AC25	50	1.5	500Δ	2.9Δ	-160	+150	65	22
	60	1.75	575Δ	2.95Δ	-160	+150	71	22
2BH1 530-7AC35	50	2.2	500Δ	4.5Δ	-220	+230	65	26
	60	2.55	575Δ	4.55Δ	-260	+250	71	26
1~ 50/60 Hz, IP55, with attached condenser, insulation class F 1)								
2BH1 530-7AV34	50	1.5	100 / 200	25.0 / 12.5	-150	+140	65	27
	60	1.75	100 / 200	30.0 / 15.0	-120	+110	71	27
2BH1 530-7AV35	50	1.5	115 / 230	22.0 / 11.0	-150	+140	65	27
	60	1.75	115 / 230	24.0 / 12.0	-120	+110	71	27
1~ 50 Hz, IP55, with attached condenser, insulation class F 1)								
2BH1 530-7AA21	50	1.5	230	9.0	-150	+140	65	22

1) For standard UL for ELECTRIC FANS UL 507 and CSA 22.2 No. 13 for Fans and Ventilators (Certificate Number E225239).

2) Relief-valve are available for limiting differential pressure.

3) Measuring-surface sound-pressure level acc. to DIN EN 21680, measured at a distance of 1 m. The pump is throttled to an average suction pressure, a hose is connected to the discharge side (vacuum pump) / suction side (compressor), but is not fitted with relief valves.

All 2BH1 achieve the standards and norms of the low voltage directive 72/23/EWG, rotating electrotechnical motor EN 60034-1-34, electromagnetic compatibility (EMC) DIN EN 61000-3/-6/-4.

The motors are designed according to the DIN EN 60 034 / DIN IEC 34-1 and temperature class F.

For the three phase machines the tolerances are $\pm 10\%$ for fixed voltage and $\pm 5\%$ for voltage range.

The single phase machines are designed with a $\pm 5\%$ tolerances. If only 90 % of the maximum allowed pressure will be used for the continuous operating then the allowed voltage range add to $\pm 10\%$.

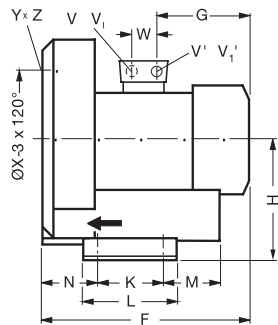
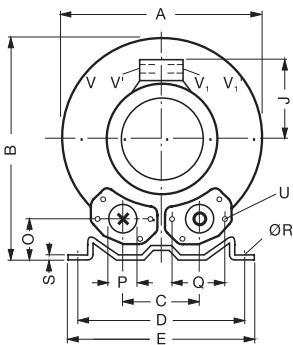
For all single and three phase machines which designed according to the UL and CSA norm (UL 507 and CSA 22.2 No. 100) the maximum allowed voltage tolerances are -10 % resp. +6 %. The frequency tolerance is maximum $\pm 2\%$.

Other voltage ranges			
50 Hz	60 Hz	2BH1 530-7A <input type="checkbox"/> . <input type="checkbox"/> 2BH1 530-7E <input type="checkbox"/> . <input type="checkbox"/>	Standard Inlet at cover side
3~			
185...225 V Δ / 320...390 V Y	200...240 V Δ / 345...415 V Y	H <input type="checkbox"/> 1	
200...240 V Δ / 345...415 V Y	220...275 V Δ / 380...480 V Y	H <input type="checkbox"/> 6	
345...415 V Δ	380...480 V Δ	H <input type="checkbox"/> 7	
500 V Δ	575 V Δ	C <input type="checkbox"/> 5	
Machines according to the ATEX norm 94/4 EG are available for the whole performance range. Following types are available: Category 3 G, 3/2 G, 3 D and 3/2 D.			
1~			
100 V / 200 V	100 V / 200 V	V <input type="checkbox"/> 4	
115 V / 230 V	115 V / 230 V	V <input type="checkbox"/> 5	
230 V	-	A <input type="checkbox"/> 1	
Further voltage range on request.			

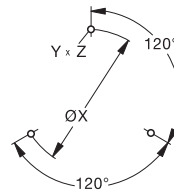
Dimensions [mm]

	Phase	A	B	C	D	E	F	G	H	J	K	L	M	N	O	P	Q	Ø R
2BH1 530-7A.0.	3~	334	337	120	260	295	339	152	174	271	115	155	97	92	48	55	83	14
2BH1 530-7A.1.	3~	334	337	120	260	295	339	152	174	271	115	155	97	92	48	55	83	14
2BH1 530-7A.2.	3~	334	337	120	260	295	371	184	174	271	115	155	97	92	48	55	83	14
2BH1 530-7A.3.	3~	334	337	120	260	295	371	184	174	271	115	155	97	92	48	55	83	14
2BH1 530-7A.2.	1~	334	337	120	260	295	371	188	174	279	115	155	97	92	48	55	83	14
2BH1 530-7A.3.	1~	334	337	120	260	295	371	178	174	287	115	155	97	92	48	55	83	14

		S	U	V (1 ~)	V' (1 ~)	V1 (3 ~)	V'1 (3 ~)	Ø X	Y x Z	X-Bohrungen	W
2BH1 530-7A.0.	3~	4	M 8 x 17	--	--	M 16 x 1.5	M 25 x 1.5	200	M 8 x 20	0°/120°/240°	32
2BH1 530-7A.1.	3~	4	M 8 x 17	--	--	M 16 x 1.5	M 25 x 1.5	200	M 8 x 20	0°/120°/240°	32
2BH1 530-7A.2.	3~	4	M 8 x 17	--	--	M 16 x 1.5	M 25 x 1.5	200	M 8 x 20	0°/120°/240°	32
2BH1 530-7A.3.	3~	4	M 8 x 17	--	--	M 16 x 1.5	M 25 x 1.5	200	M 8 x 20	0°/120°/240°	32
2BH1 530-7A.2.	1~	4	M 8 x 17	M 16 x 1.5	M 25 x 1.5	--	--	200	M 8 x 20	0°/120°/240°	32
2BH1 530-7A.3.	1~	4	M 8 x 17	M 16 x 1.5	M 25 x 1.5	--	--	200	M 8 x 20	0°/120°/240°	32



Hole pattern cover



Changes in particular the quoted performance curve, datas and weights without prior notice. The figures are without obligations.

Gardner Denver

*Elmo Rietschle is a brand of the
Gardner Denver Blower Division*

info@de.gardnerdenver.com
www.gd-elmorietschle.com

Gardner Denver Schopfheim GmbH

Roggenbachstraße 58
79650 Schopfheim - Germany

Tel.: +49 7622 392-0
Fax: +49 7622 392-300

Gardner Denver Deutschland GmbH

Industriestraße 26
97616 Bad Neustadt - Germany

Tel.: +49 9771 6888-0
Fax: +49 9771 6888-4000